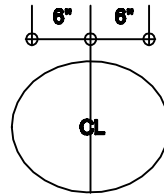
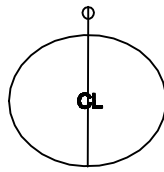
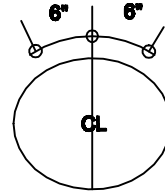
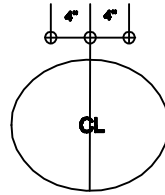
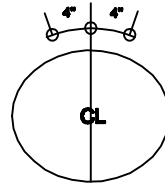
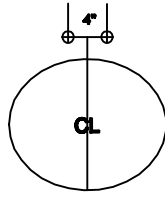
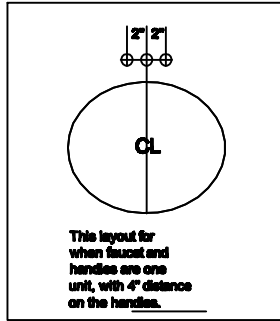


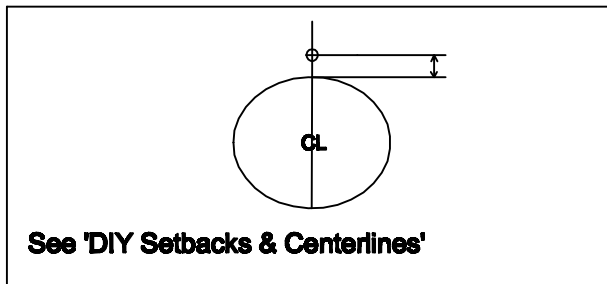
DIY Faucet Hole Layouts



Decide on a faucet configuration and circle the one you have chosen. The distance from the sink cutout to the CENTER of the faucet holes is needed. Use the 'DIY Setbacks & Centerlines' sheet to determine this distance and enter it on the line next to the diagram below. The dimension you give should work with all of the faucet layouts given on this

page.

It is important to make sure sink fits inside cabinet and leaves enough room on counter for faucet holes. Always take into consideration the thickness of the backsplash behind the sink.



I accept the responsibility that all information given is accurate and to my satisfaction.

X